

The Island, Bridewell street entrance
Nelson St, Bristol
BS1 2QD

0117 3763457

info@theisland.uk

Introduction

- The Island is a multi use arts venue housing artists studios, a dance space, circus training space, the Island team's admin office, a gallery space and a venue in the basement which hosts club nights and workshops.
- Please note, we do not have an accessible toilet on site and all areas are accessed via steps. We are housed in the old Bridewell police station, a grade II listed building. Access is limited.

Comments

- We have no accessible toilets on site, though all toilets are inclusive to all gender identities.

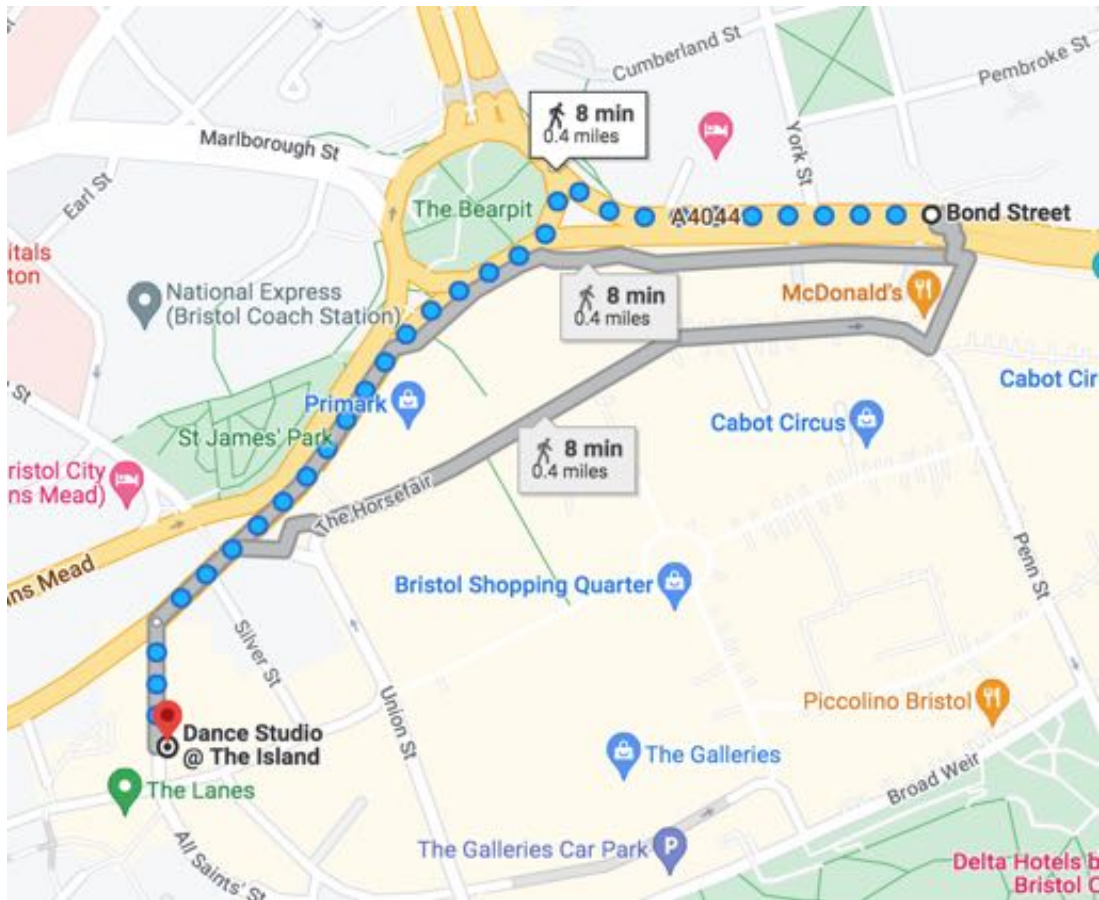
Opening times

- The Island office is usually staffed 10am - 5pm Monday to Friday, if you want to come and discuss using the space it is useful to contact us first on info@theisland.uk or give us a call on **0117 3763457** .

Location bus/rail

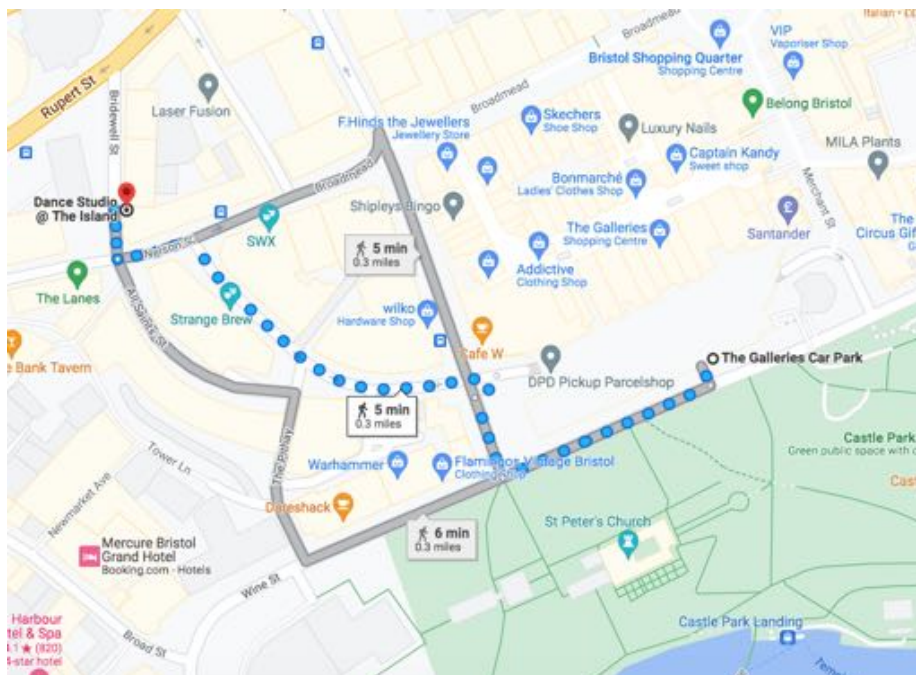
- The nearest train station is Bristol Temple Meads.
- Buses from Temple Meads, you can get the number 8 bus from just outside the station. The bus generally runs every 20-30 minutes, though at busier times there is a bus every 10 minutes. Take the bus 1 stop (around 7 minutes) to Bond Street (check with the driver that Bond street is their next stop as the bus does a loop around the city) and when you get to Bond Street you are an 8 minute walk from The Island.

- See below for maps from Bond Street to The Island, Bridewell Street.



Parking

- The cheapest place to park nearby is at The Galleries, see the maps below to get to The Island, Bridewell street from The Galleries car park.



- **Information, parking at The Galleries**

1 Newgate
Broadmead
Bristol, UK
BS1 3HA

0117 929 0569

*Information correct 26/01/2023, please check the website before planning your visit
<https://www.parkme.com/en-gb/lot/102666/the-galleries-bristol-uk>

Hours of Operation

Mon - Sat 6:30am -10pm

Sun 6:30am - 5pm

Prices

1 Hour £2

2 Hours £3.20

Each Additional Hour £1




7 Hours £8.20

24 Hours £18

Mon-Sun
In after 4pm £2

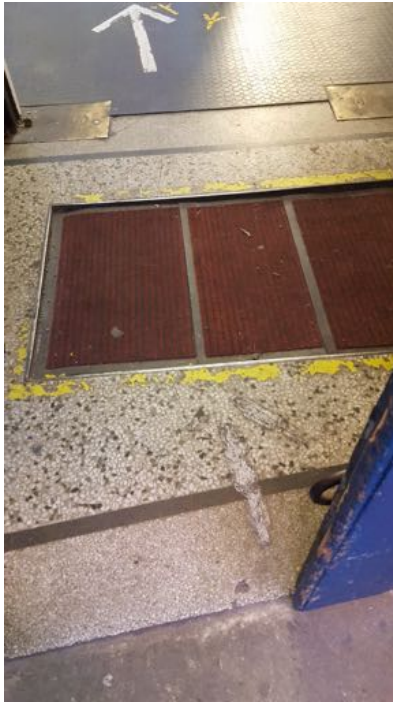
Bills / Coins / Mastercard / Visa

Directions to The Island Gallery Space from Bridewell Street

	<ul style="list-style-type: none">• Access to the Venue is via Bridewell street, the door is set back down a short alleyway which is approximately 14m from Nelson Street and almost opposite Rough Trade records.
	<ul style="list-style-type: none">• The alleyway is accessed via 2 old uneven steps measuring roughly 9cm & 15cm high with a depth of 38cm.
	<ul style="list-style-type: none">• Entrance is via a blue door on the right hand side of the alleyway approximately 7.5m from the steps. The left hand side of the door opens inwards, it is 65cm wide, the door is heavy and swings shut.• The right hand blue door can also be opened from the inside, it is 65cm wide and heavy.• If attending an exhibition the left hand door should be open.• (If you are renting the space, you should have been sent codes and the code lock is on the blue door 60cm from the left and 145cm from the ground)



- To access the door there is a step up which is uneven and worn, it is approximately 6cm high.



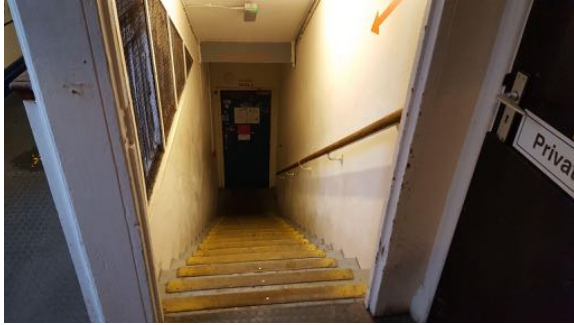
- Just inside the door on the stone floor is a rectangular indent below floor level for the mat. There is a small lip and the mats lie around 2cm beneath floor level, the matted area is approximately 50cm from the door, the mat is 60cm wide and is not parallel with the door. The matted surface is uneven.



- 47cm from the mat is a level change to rubber flooring, the rubber flooring sits less than 1cm above the level of the stone floor.



- This is the view just inside the door, to get to the venue take the steep steps to the right hand side.



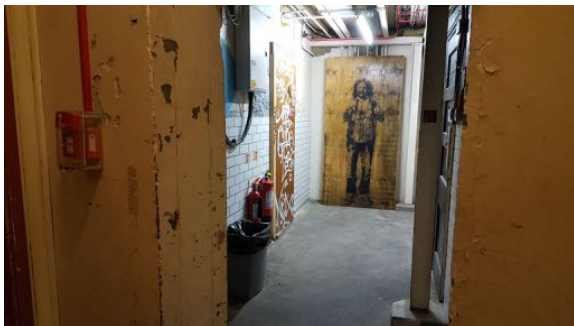
- There are 17 steps, the height of the steps are between 19 & 21cm, the depth of the steps are between 26 & 29cm's.
- There is a handrail on the right hand side.



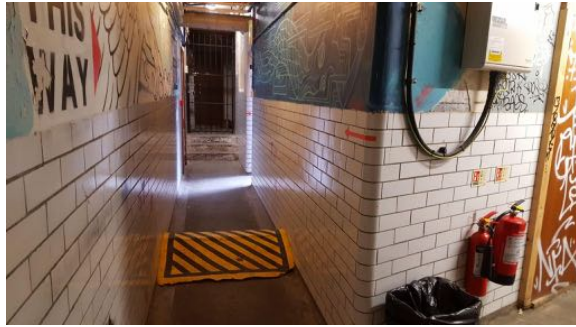
- If you are attending an event at the Venue the door at the bottom of the stairwell should be open. If it is not, you should have a code and the code lock is 124cm high.
- The door opens inwards and swings shut.
- To get to the Venue, turn left and almost immediately there is a step, which you can see below.



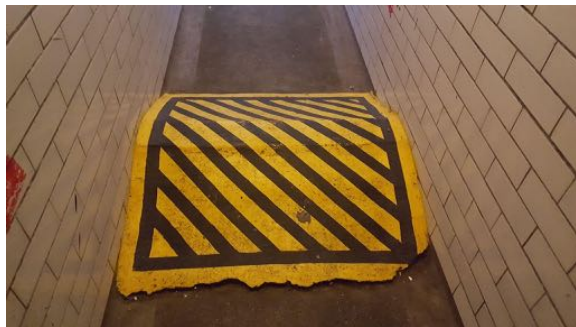
- The step is 8cm high with a depth of 21cm.



- After the step you will see this view in front of you, to get to the venue turn left.



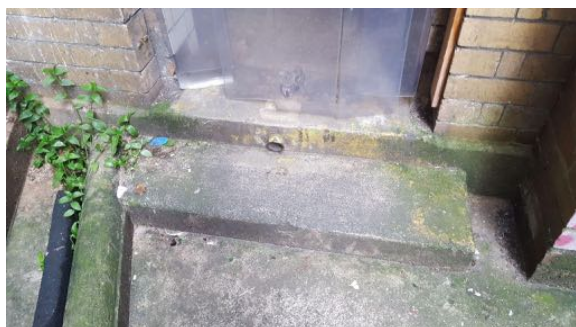
- To get to the Venue follow this corridor approx. 6.6m and take the left hand exit into our courtyard (go towards the light!).
- Approximately 2.9m down this corridor is a large ramp



- The ramp has an incline of approximately 45% and is a maximum of around 22cm in height. The ramp is uneven and the inclines of the two sides are slightly different.



- To get to the Venue go through the exit into our courtyard which will lead you to the venue.
- The doorway is approximately 2.6m beyond the ramp with 2 steps down into the courtyard.



- The drop of both steps is 11cm and the depth of the step is 30cm.



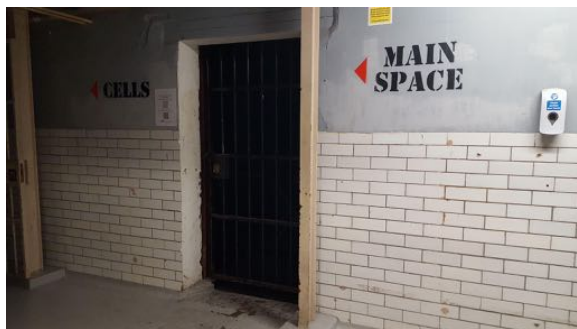
- The courtyard is approximately 21.5m long and the entrance to the venue is at the end on the right hand side.



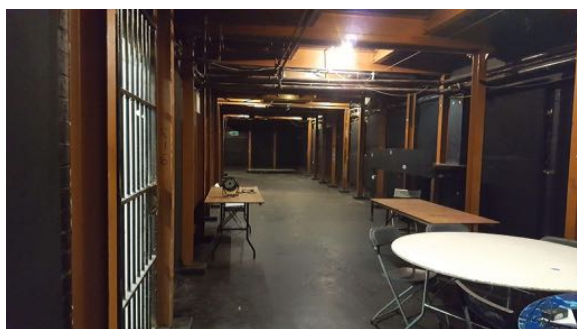
- There are 2 small steps to get back into the building.
- They both have a height of 13cm and the depth of the step is 30cm.



- When you step back into the building you will see the Venue in front of you through the door next to the MAIN SPACE signage. This door is approximately 6.5m from the entrance.



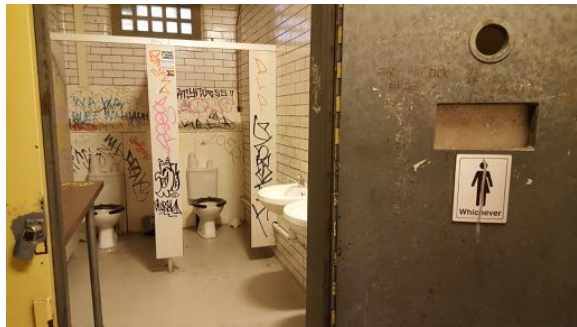
- Close up, entrance to Venue



- This is our Venue space



- Coming out of the Venue, (in this image the venue is behind me) there are 2 gender neutral toilets just down the corridor on the top right hand side of this picture, around 7.5m from the Venue entrance.



- Gender neutral toilet 1



- Gender neutral toilet 2